

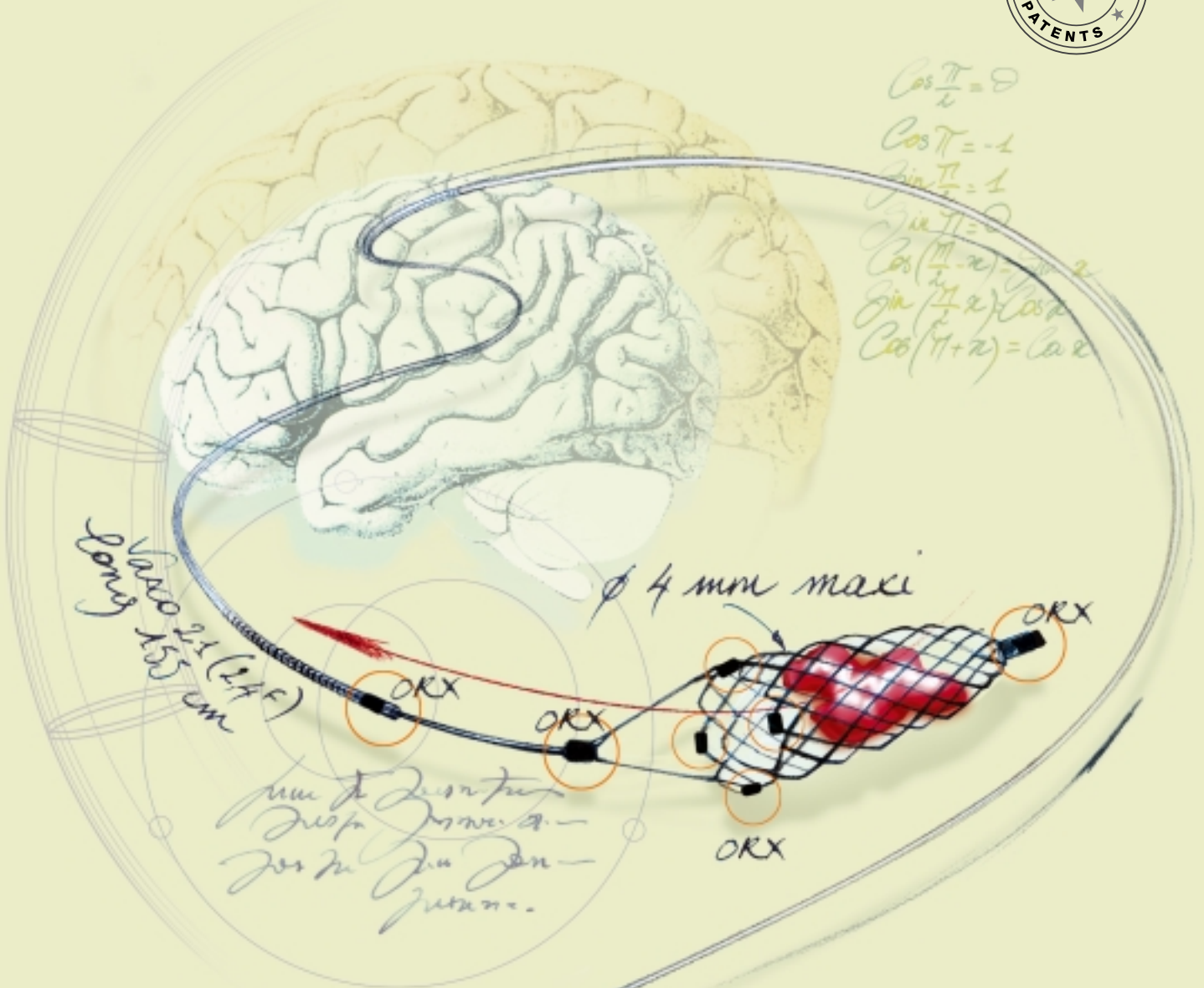
CATCH

Prof. René Chapot

MECHANICAL THROMBUS RETRIEVER

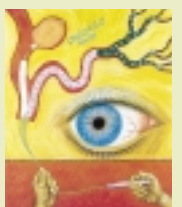
To meet clinical requirements in efficient retrieval of intracerebral thrombus, BALT designed the CATCH Retrieval system. CATCH incorporates the latest technical advances developed for the LEO Intercranial stent.

Like all BALT products, the CATCH is remaining faithful to our principles of performance and ease of use.

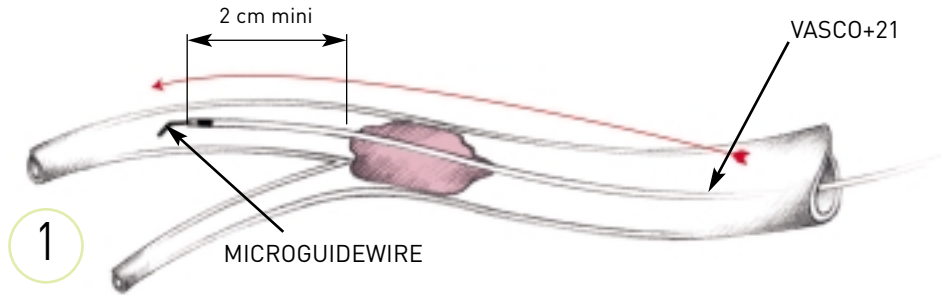
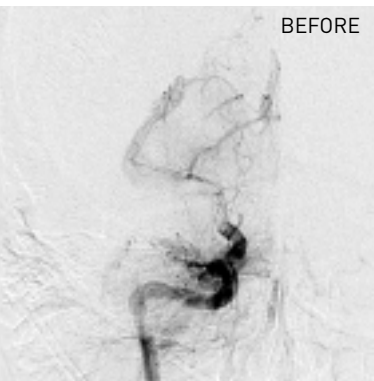
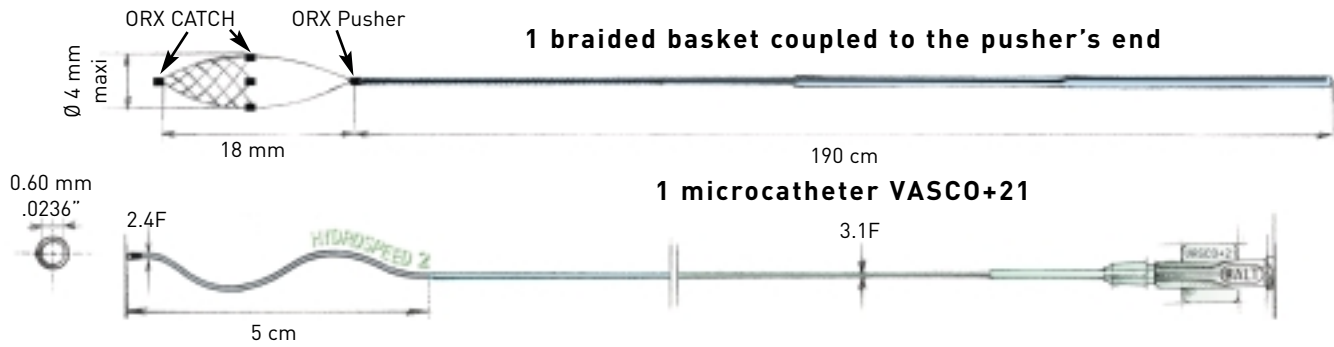


A VASCO+21 catheter is placed down stream from the thrombus, then the finely reinforced Nitinol CATCH basket is deployed to retain the clot and to withdraw it down to the guiding catheter, reducing the risk of clot fragmentation.

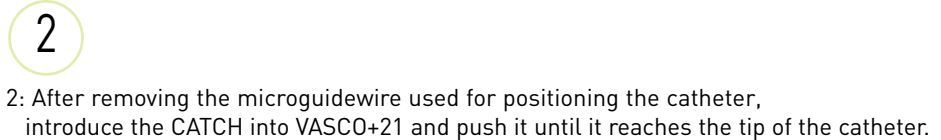
The CATCH has a maximum diameter of 4 mm enabling thrombus removal in arteries up to 5 mm in diameter.



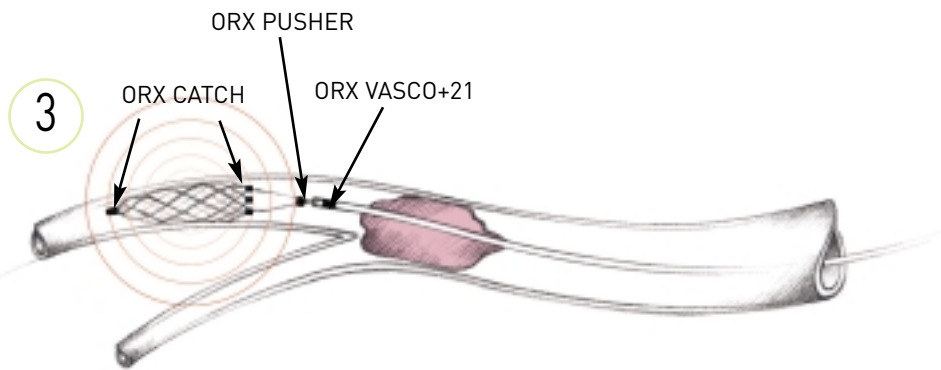
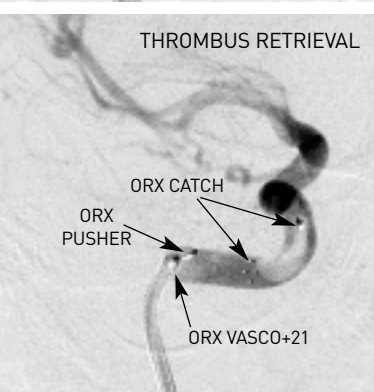
DESCRIPTION OF CATCH SYSTEM (REF. CATCH) :



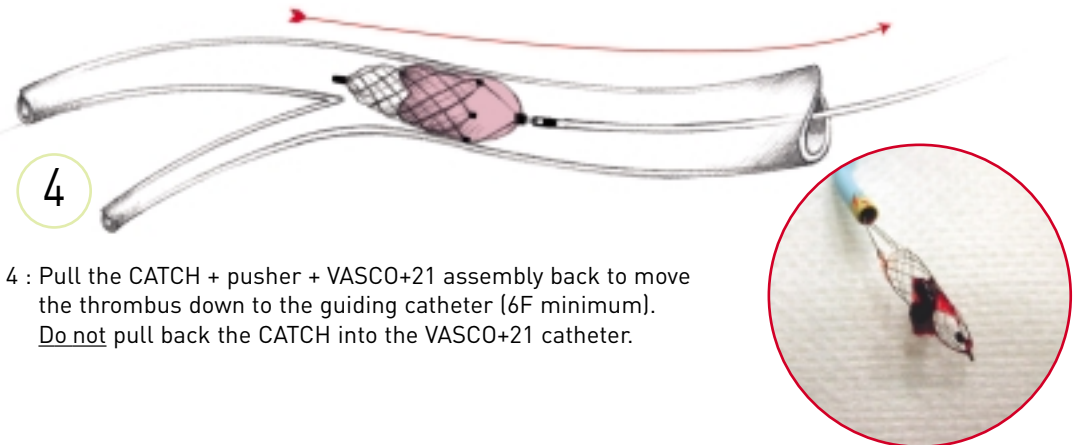
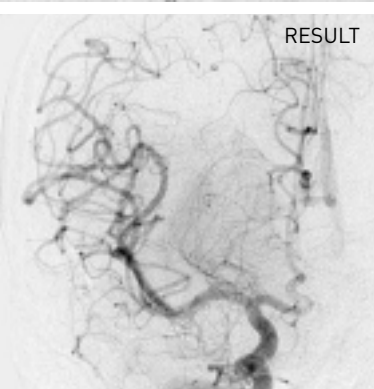
1: Run the VASCO+21 catheter through the thrombus and position it at least 2 cm downstream from the thrombus.



2: After removing the microguidewire used for positioning the catheter, introduce the CATCH into VASCO+21 and push it until it reaches the tip of the catheter.



3: Deploy the CATCH out of the VASCO+21 downstream from the thrombus by pulling the catheter. The radio-opaque marker of the VASCO+ should have over passed that of the pusher. The maximum diameter of the CATCH is 4 mm.



4: Pull the CATCH + pusher + VASCO+21 assembly back to move the thrombus down to the guiding catheter (6F minimum). Do not pull back the CATCH into the VASCO+21 catheter.